



POWER TO LIFT

# HMF 1320K-RCS

The HMF 1320K-RCS is a reliable and wear-resistant crane for fast and precise handling.



## A powerful working tool with excellent lift-to-weight ratio

The HMF 1320K-RCS has a dual Power Plus link arm system, HDL-d speed adaptation and RC-d proportional control valve with radio remote control. It provides a very fast and precise handling.

The crane is available with fixed or variable flow pump. It has up to 5 hydraulic extensions and can optionally be delivered with hydraulically extensible stabilizer beams and swing-up stabilizer legs.

The excellent lift-to-weight ratio, the operational safety and the nice and wear-resistant design make this crane an extremely versatile and powerful working tool.

Additionally, the crane can be equipped with HMF's load-dependent EVS system monitoring and ensuring stability.

### Main benefits

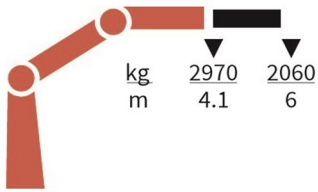
- Strong and versatile
- Radio remote control system for total freedom
- High manoeuvrability and working speed

PERFORMANCE	1320-K1	1320-K2	1320-K3	1320-K4	1320-K5
Load Moment (tm)	12,3	11,9	11,6	11,3	11
Hydraulic reach (m)	6,1	8,2	10,5	12,7	15
Weight excl. stabilizers (Kg)	1115	1240	1350	1445	1530
Weight of stabilizers, standard (Kg)	170	170	170	170	170
Lift-to-weight ratio	9,6	8,4	7,6	7	6,5
Slewing Angle (°)	420	420	420	420	420
Slewing torque (kgm)	1325	1325	1325	1325	1325
Working pressure (bar)	345	345	345	345	345
GEOMETRY					
Height above mounting surface (mm)	2135	2135	2135	2135	2135
Width, folded, standard (mm)	2500	2500	2500	2500	2500
Length of crane, no extra valves (mm)	747	747	747	747	747

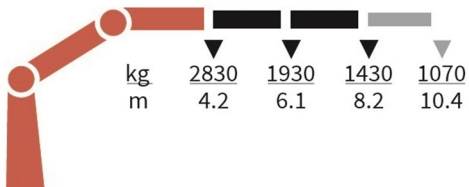
# Lifting Capacity



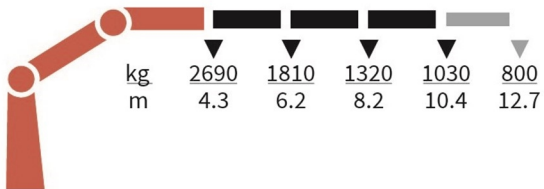
1320-K1-RCS



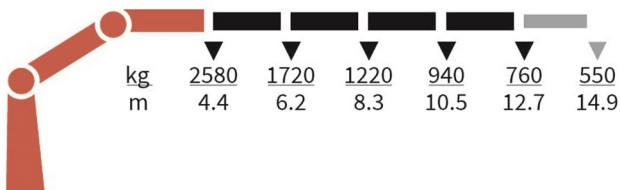
1320-K2-RCS



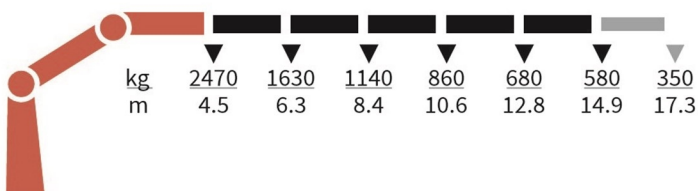
1320-K3-RCS



1320-K4-RCS



1320-K5-RCS



## Basics

HMF 1320K-RCS

Electronic speed adaptation system, HDL-d/HD5
Progressive crane control - PCC
Priority flow control - PFC
Dual power plus link arm system
Proportional control valve PVG 32
Internal hose routing
Environmentally friendly quality coating - EQC
RCL safety system

## Options

<b>Control stations</b>
High stand RC
Top seat RC
Heated seat
<b>Control systems</b>
Radio remote control Maxi - RC-MAX
Radio remote control Mini - RC-MIN
<b>Electrical options</b>
Spotlight
Voltage
<b>Extra valves</b>
Extra valves in hose guides
Extra valves in hose reels, internally led
Multi-coupling
<b>Hydraulic hoist</b>
Hydraulic hoist 1500
2-part snatch block
<b>Hydraulics</b>
4 manually controlled available stabilizer functions
2 manually controlled available stabilizer functions
1-4 available radio remote-controlled functions
Biodegradable oil
Ball valve for tank
Oil cooler, medium
Oil tank 65 l mounted on the crane
Radio remote control of stabilizer beams and stabilizer legs on crane
<b>Mechanical options</b>
Manual extension
Hook for manual extension
Crane orientation
Mounting bolt kit
Fittings for mounting bolt kits
Mechanical slew limitation
<b>Stability and safety</b>
Electronic vehicle stability - EVS
Cylinder limitation - CYL
Cylinder and beam limitation - CYBEL
2-section Cylinder and beam limitation - 2CYBEL
2-stage load moment limitation
Preparation for alternative stability system
Stabilizer duty control
Alarm flash on stabilizer legs

Calibration bypass - CBS
Light tower
Temperature monitoring
High stand safety system - basic
High stand safety system - envelope
High stand safety system - quadrant
Quadrant operator protection system
Beam and height warning - BEHEW
Beam and park warning - BEPAW
Stabilizer leg warning
<b>Stabilizer beams and legs</b>
Manual swing-up stabilizer legs with gas spring
Manual swing-up stabilizer legs
Fixed vertical stabilizer legs
Footplate with ball joint
Footplate extended
Hydraulic stabilizer beams 4.6 m - 5.6 m
Fixed vertical stabilizer legs, short
Manual stabilizer beams 4.6 m - 5.6 m
<b>Colours</b>
RAL colors