



POWER TO LIFT

# HMF 3220K-RCS

The HMF 3220K-RCS is a versatile crane with high manoeuvrability and working speed.



## Main benefits

- Great flexibility and smooth operation for demanding tasks
- High lifting capacity
- Strength and operational safety

## A sturdy and flexible crane

The HMF 3220K-RCS is a versatile crane with a wide variety of options. The crane can be used either as a hook crane, with hoist and/or combined with HMF's Fly-Jibs, which provides the user with a total impression of easy operation and unique capacity, maximum safety and great control of lifting tasks.

The crane provides for low costs of ownership for you as a crane owner. With a low tare weight and reduced space requirements, maximum utilization of the truck body as well as savings on fuel are ensured.

The crane is moreover designed in a service-friendly manner and with internal hose routing to protect against external damage. This ensures easy maintenance, little downtime and ultimately low costs of ownership.

Additionally, the crane can be delivered with HMF's load-dependent EVS system monitoring and ensuring stability.

PERFORMANCE	3220-K2	3220-K3	3220-K4	3220-K5	3220-K6	3220-K7	3220-K8
Load Moment (tm)	30,7	29,8	29,5	28,7	27,9	27,8	27,1
Hydraulic reach (m)	8,3	10,3	12,4	14,6	16,8	19	21,3
Weight excl. stabilizers (Kg)	2590	2790	2990	3160	3320	3470	3595
Weight of stabilizers, standard (Kg)	370	370	370	370	370	370	370
Lift-to-weight ratio	10,4	9,4	8,8	8,1	7,6	7,2	6,8
Slewing Angle (°)	∞	∞	∞	∞	∞	∞	∞
Slewing torque (kgm)	3800	3800	3800	3800	3800	3800	3800
Working pressure (bar)	365	365	365	365	365	365	365
GEOMETRY							
Height above mounting surface (mm)	2350	2350	2350	2350	2350	2350	2350
Width, folded, standard (mm)	2500	2500	2500	2500	2500	2500	2500
Length of crane, no extra valves (mm)	1024	1024	1024	1024	1024	1130	1130

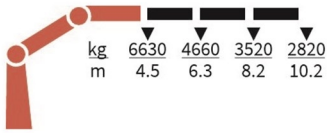
# Lifting Capacity



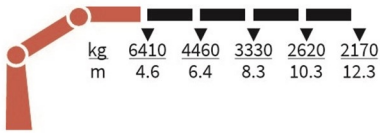
3220-K2-RCS



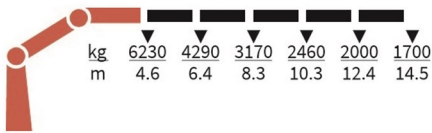
3220-K3-RCS



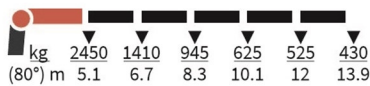
3220-K4-RCS



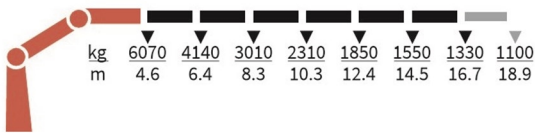
3220-K5-RCS



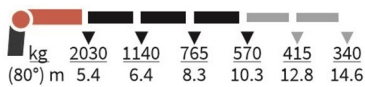
FJ1000-K5



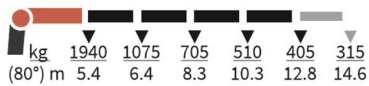
3220-K6-RCS



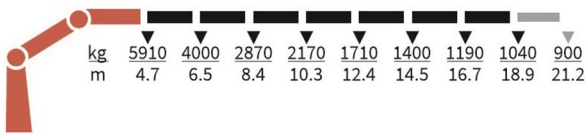
FJ600-K3



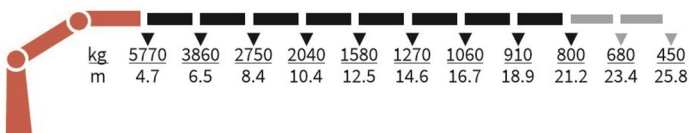
FJ600-K4



3220-K7-RCS



3220-K8-RCS



## Basics

HMF 3220K-RCS

Electronic speed adaptation system, HDL-d/HD5
Progressive crane control - PCC
Priority flow control - PFC
Dual power plus link arm system
Proportional control valve PVG 32
Radio remote control of stabilizer beams and stabilizer legs on crane
Internal hose routing
Environmentally friendly quality coating - EQC
RCL safety system

## Options

<b>Control stations</b>
Personnel basket on crane – MEWP
<b>Control systems</b>
Radio remote control Maxi - RC-MAX
Radio remote control Mini - RC-MIN
<b>Electrical options</b>
Spotlight
Voltage
<b>Extra valves</b>
2 extra valves
Extra valves in hose guides
Extra valves in hose reels, internally led
Extra valves in hose reels, externally led
Multi-coupling
<b>Fly-jib</b>
Fly-jib 600
Fly-jib 1000
Personnel basket on Fly-jib – MEWP-FJ
<b>Hydraulic hoist</b>
Hydraulic hoist 2500
2-part snatch block
<b>Hydraulics</b>
Ball valve for tank
Oil cooler, medium
Oil cooler, large
1 radio remote controlled available proportional function
3rd extra valve
Hose kit for 1 extra valve led to the jib
Biodegradable oil
<b>Mechanical options</b>
Manual extension
Shielding of load-holding valve
Protective guard at the rear of the jib
Mounting bolt kit
Fittings for mounting bolt kits
<b>Stability and safety</b>
Electronic vehicle stability - EVS
Cylinder limitation - CYL
Cylinder and beam limitation - CYBEL
2-stage load moment limitation

Preparation for alternative stability system
Alarm flash on stabilizer legs
Calibration bypass - CBS
Light tower
Temperature monitoring
Beam and height warning - BEHEW
Stabilizer leg warning
<b>Stabilizer beams and legs</b>
Hydraulic swing-up stabilizer legs
Manual swing-up stabilizer legs with gas spring
Fixed vertical stabilizer legs
Footplate with ball joint
Footplate extended
Hydraulic stabilizer beams 5.6 m - 6.4 m